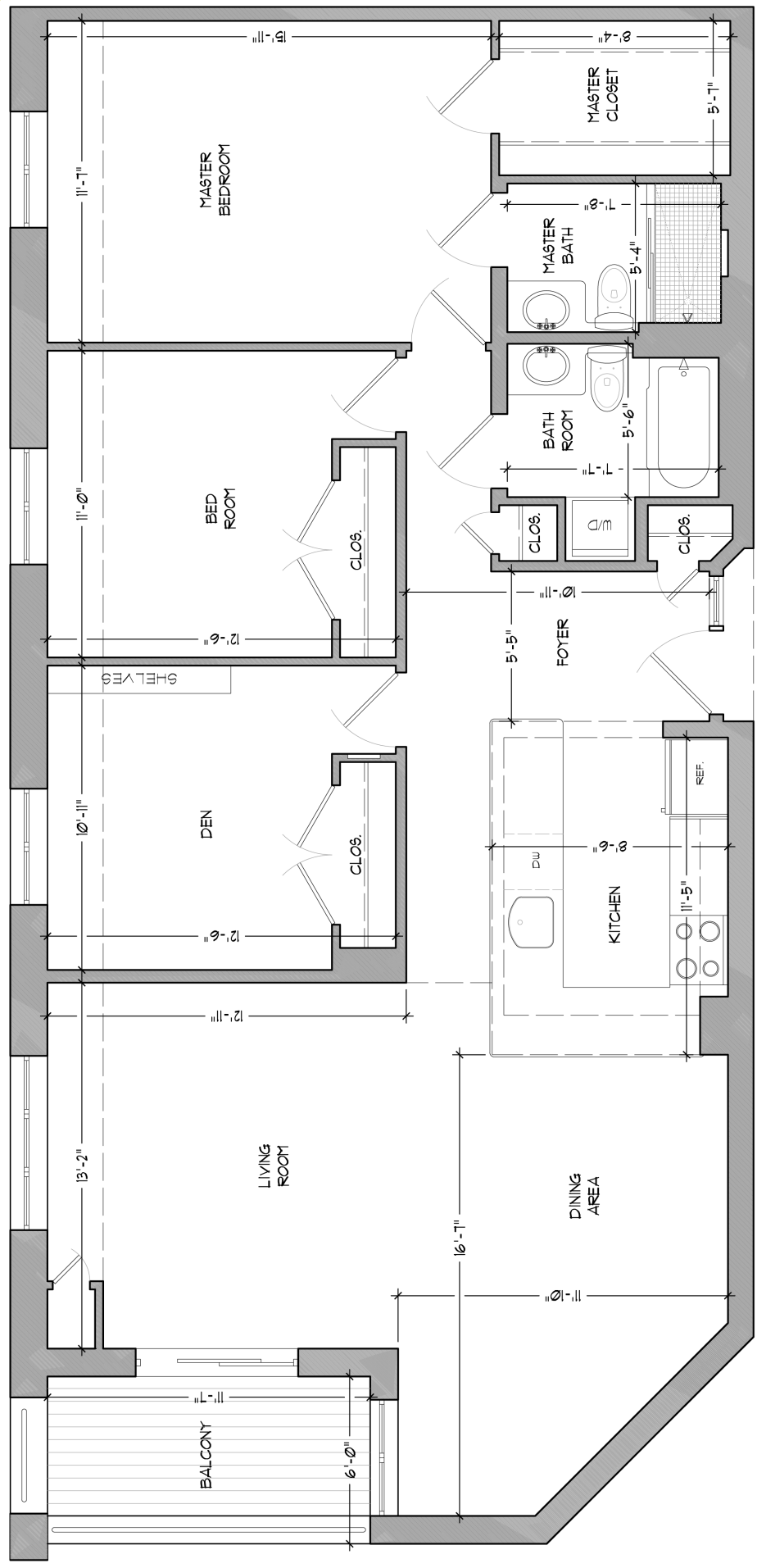
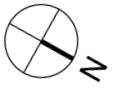


# RIDGE HILL COLLECTION



RIDGE HILL TWO  
APT G311



# RIDGE HILL COLLECTION

**Apartment Number:** G311  
**Floor Plan Name:** The Ridge Hill One  
**Description:** Two Bedroom/Two Bath/Balcony/Den  
**Square Footage:** 1215

**Capital Preservation (Declining Refund)** \$ 599,700

Lifecare is Required

Monthly Service Fee with Lifecare \$ 7,197

*Second Person with Lifecare* \$ 1,993

**Estate Preservation (90% refundable)** \$ 999,500

Lifecare is Optional

Monthly Service Fee with Lifecare Option \$ 7,197

*Second Person with Lifecare Option* \$ 1,993

Monthly Service Fee without Lifecare Option \$ 6,077

*Second Person without Lifecare Option* \$ 1,354

**Lifecare Fee:\* (Per Person)** \$ 60,000

*\*This one time, partially refundable fee and a portion of the corresponding Monthly Service Fee may be tax deductible depending on your situation. Tax laws change frequently.*

*We encourage consultation with a tax advisor.*

Prices valid April 1, 2021 - March 31, 2022